

Recess Kit

- Enables 16, 19 or 22 module consumer unit to be recessed into wall
- Supplied with adjustable brackets and trim
- Adjustable brackets enable the consumer unit to be recessed between 42mm and 62mm from the outer surface of the wall
- Consumer unit not included with kit
- Suitable for surface mount consumer units



CFA34

Product Code	Description	Inner Carton
CFA32	Recessing kit for 16 module Consumer Unit	1
CFA33	Recessing kit for 19 module Consumer Unit	1
CFA34	Recessing kit for 22 module Consumer Unit	1

Lockable Cover

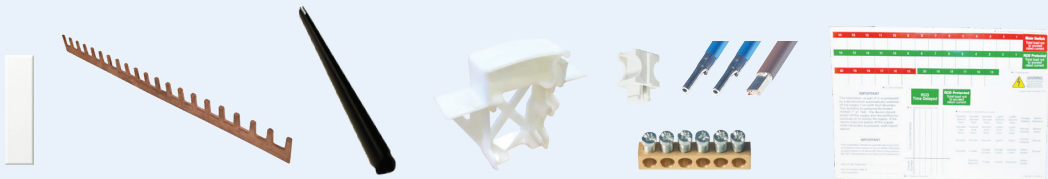
- Lockable covers are pre-assembled
- Ideal during first installation to ensure power isolation, and protect installer



CFUA22

Product Code	Description	Inner Carton
CFUA19	6 Module lockable cover complete with up opening visor and barrel lock fitted	1
CFUA20	9 Module lockable cover complete with up opening visor and barrel lock fitted	1
CFUA21	12 Module lockable cover complete with up opening visor and barrel lock fitted	1
CFUA22	16 Module lockable cover complete with up opening visor and barrel lock fitted	1
CFUA23	19 Module lockable cover complete with up opening visor and barrel lock fitted	1
CFUA24	22 Module lockable cover complete with up opening visor and barrel lock fitted	1

Accessories



CUA01 CUA02 CUA03 CUA04 CUA05 CUA11

Product Code	Description	Inner Carton
CUA01	Consumer Unit Cover Blanks (pack of 10, 5 x pairs)	10
CUA02	Busbar 21 Way (cut to fit all consumer units)	10
CUA03	Busbar Shield 21 way (cut to fit all consumer units)	10
CUA04	MCB Blank, 1 Module, DIN rail mounted	10
CUA05	Cable Kit includes neutral and live cables, terminal bar, fixing clip and spare labels (may be used to convert mains switch to split load consumer unit)	5
CUA11	Spare label sheets (Pack of 5)	10
CUA15	Replacement cover lock	1
CFA16	Metal cover lock blank for use with the metal lockable covers after the barrel lock is removed	1

*Cable kit enables consumer unit upgrade from main switch to split load or split load to dual RCD, or dual RCD to triple RCD (22 module only)